



441 Page Street • P.O. Box 427
Troy, North Carolina 27371-0427
PHONE: (910) 576-6511 • FAX: (910) 576-2044

TO: Board of Education

FROM: Dale Ellis

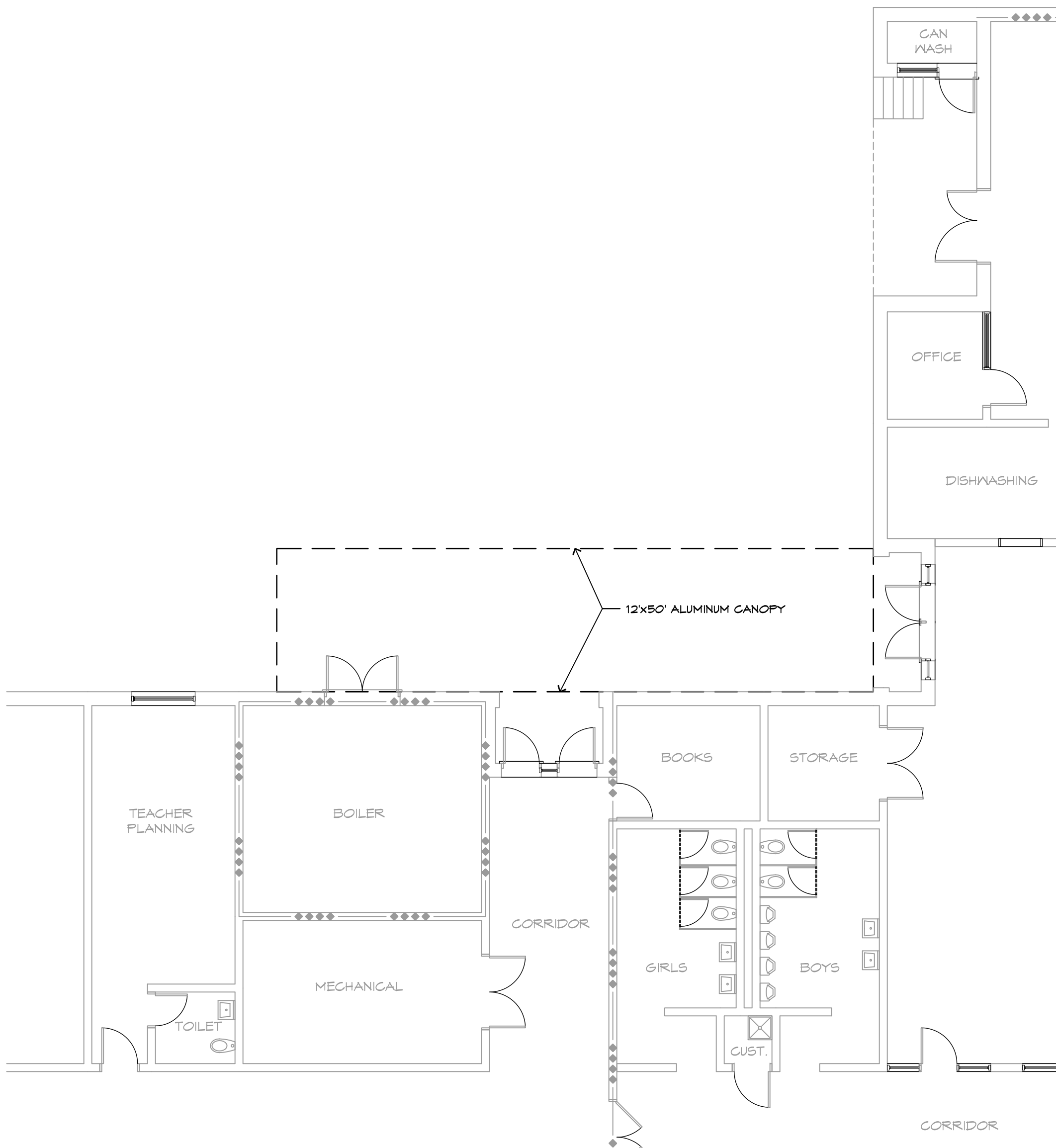
DATE: February 6, 2017

SUBJ: East Middle Wing Update

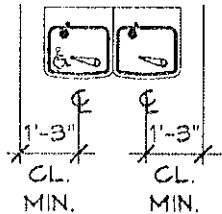
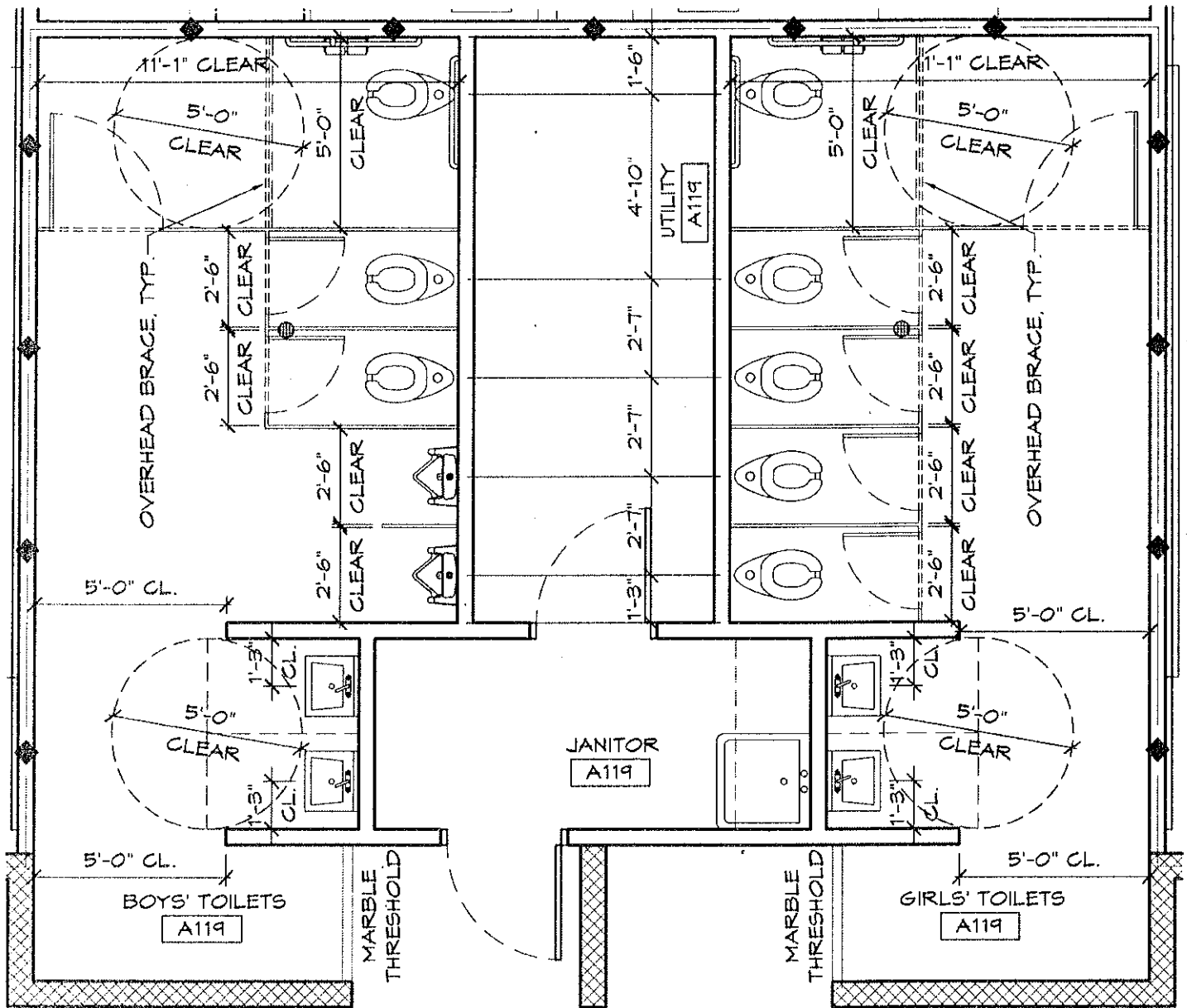
Attached are updated plans for the canopy and restroom area of the East Middle Wing. I will be available to answer any questions you may have.



SCALE: 1/32" = 1'-0"



2 FLOOR PLAN
A2.3 SCALE: 1/8" = 1'-0"



11 ENLARGED GROUP TOILET A6.1 SCALE: 1/4" = 1'-0"

